



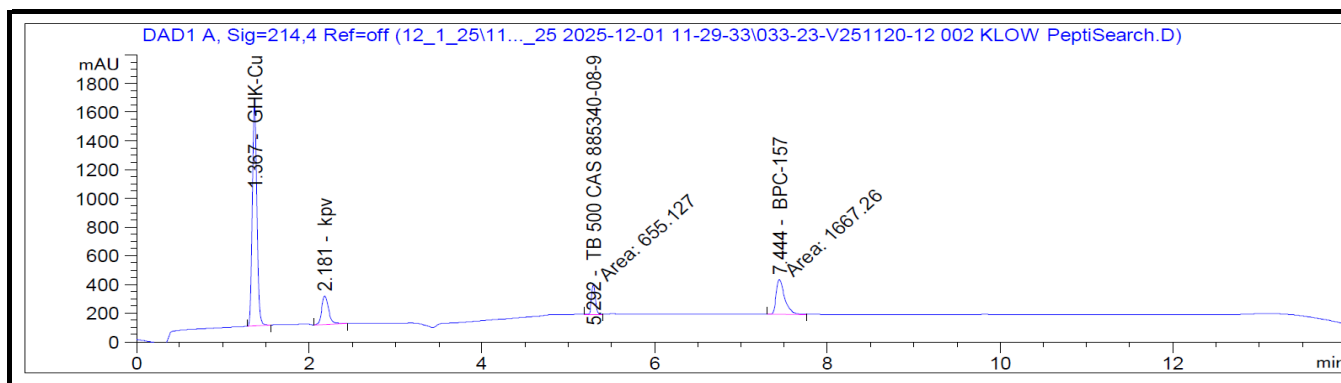
Vanguard Laboratory
2635 Parkmont Ln
Olympia, Wa 98502
360-967-7010

Certificate of Analysis

KLOW 50 mg/10 mg/10 mg/10 mg

Report To:
PeptiSearch

Compound: KLOW
Quantity: 50 mg/10 mg/10 mg/10 mg
Laboratory ID: C251120-12 002
Lot Number: KLOW-1125
Date Reported: 12/1/2025



| Analysis | Method | Result |
|--------------------------------|-------------|-----------------|
| Chromatographic Purity (Total) | HPLC-UV/VIS | >99.00% ± 0.18% |
| Quantity: GHK-Cu | HPLC-UV/VIS | 50.50 mg |
| Quantity: KPV | HPLC-UV/VIS | 10.10 mg |
| Quantity: BPC-157 | HPLC-UV/VIS | 14.07 mg |
| Quantity: TB-500 | HPLC-UV/VIS | 12.72 mg |



Report By: Dustin Newman, Laboratory Director on 12/1/2025

Approved By: Tori Johnson, Operations Manager on 12/1/2025



Please consult A2LA Certificate #6377.01.01 for a list of accredited tests. Samples were received in acceptable condition. The result(s) in this report relate only to the portion of the sample(s) tested. All analyses were performed consistent with the Vanguard Laboratory Quality Management System. Vanguard Laboratory and its staff did not observe or participate in the sample selection process, and cannot confirm the authenticity of the sample or its representativeness of the associated lot/batch.